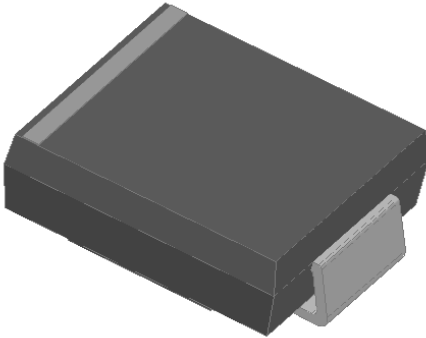


Surface Mount Schottky Rectifier

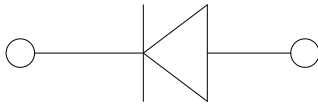


Features

- Guardring for overvoltage protection
- Low power loss
- Extremely fast switching
- High forward surge capability
- High frequency operation
- Meets MSL level 1, per J-STD-020, LF maximum peak of 260 °C
- Part no. with suffix "Q" means AEC-Q101 qualified

Typical Applications

For use in low voltage high frequency inverters, freewheeling, DC/DC converters, automotive and polarity protection applications.



Mechanical Data

- **Package:** DO-214AB (SMC)
Molding compound meets UL 94 V-0 flammability rating, RoHS-compliant
- **Terminals:** Tin plated leads, solderable per J-STD-002 and JESD22-B102
- **Polarity:** Color band denotes the cathode end

■ Maximum Ratings (Ta=25°C Unless otherwise specified)

PARAMETER	SYMBOL	UNIT	SS82Q	SS84Q	SS86Q	SS810Q	SS820Q
Device marking code			SS82	SS84	SS86	SS810	SS820
Repetitive Peak Reverse Voltage	V _{RRM}	V	20	40	60	100	200
Average Rectified Output Current @60Hz sine wave, Resistance load, T _L (FIG.1)	I _O	A	8.0				
Surge(Non-repetitive)Forward Current @60Hz Half-sine wave, 1 cycle, Ta=25°C	I _{FSM}	A	150				
Storage Temperature	T _{stg}	°C	-55 ~+150				
Junction Temperature	T _J	°C	-55~+125		-55 ~+150		

■ Electrical Characteristics (Ta=25°C Unless otherwise specified)

PARAMETER	SYMBOL	UNIT	TEST CONDITIONS	SS82Q	SS84Q	SS86Q	SS810Q	SS820Q
Maximum instantaneous forward voltage drop per diode	V _F	V	I _{FM} =8.0A	0.55	0.60	0.70	0.85	0.95
Maximum DC reverse current at rated DC blocking voltage per diode	I _R	mA	Ta=25°C	0.2			0.1	
			Ta=100°C	20			5.0	
Typical junction capacitance	C _J	pF	Measured at 1MHz and Applied Reverse Voltage of 4.0 V.D.C.	482		334	270	166



SS82Q THRU SS820Q

■ Thermal Characteristics (Ta=25°C Unless otherwise specified)

PARAMETER		SYMBOL	UNIT	SS82Q	SS84Q	SS86Q	SS810Q	SS820Q
Thermal Resistance	Between junction and ambient	R _{θJ-A}	°C/W	45 ⁽¹⁾				
	Between junction and lead	R _{θJ-L}		12 ⁽¹⁾				

Note (1)

Thermal resistance from junction to ambient and from junction to lead mounted on P.C.B. with 0.6" x 0.6" (16 mm x 16 mm) copper pad areas

■ Ordering Information (Example)

PREFERRED P/N	PACKAGE CODE	UNIT WEIGHT(g)	MINIMUM PACKAGE(pcs)	INNER BOX QUANTITY(pcs)	OUTER CARTON QUANTITY(pcs)	DELIVERY MODE
SS82Q-SS820Q	F1	Approximate 0.254	3000	6000	42000	13" reel

■ Characteristics (Typical)

FIG.1: Io-TL Curve

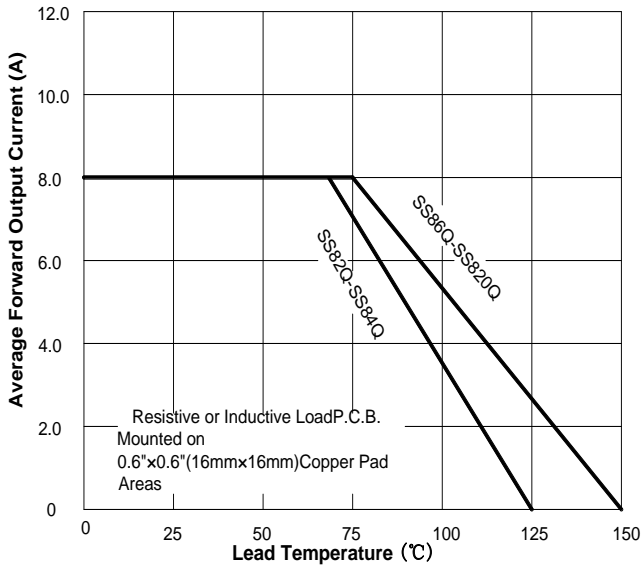


FIG.2: Forward Surge Current Capability

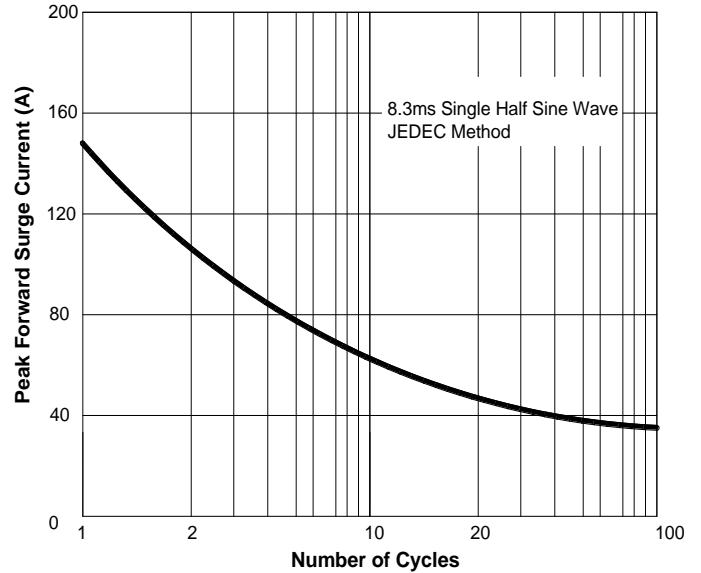


FIG.3: Forward Voltage

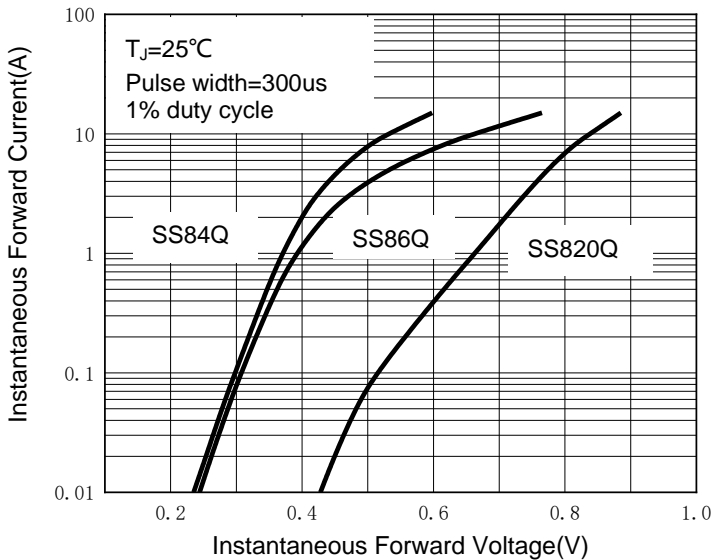
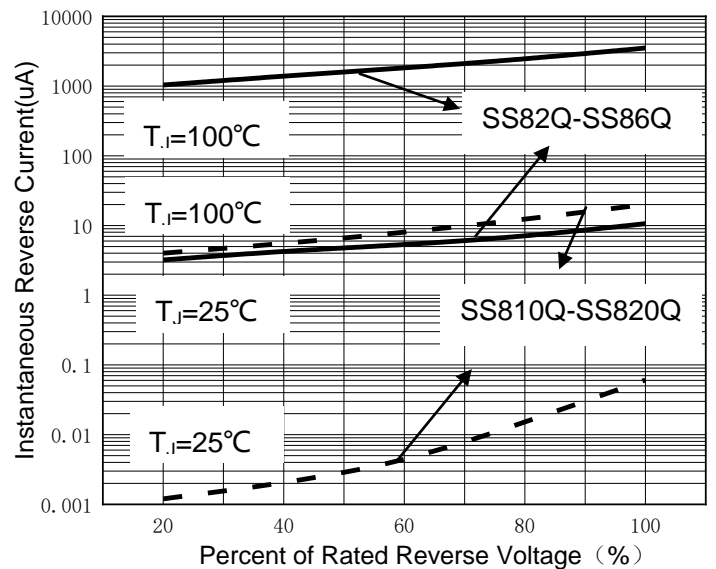
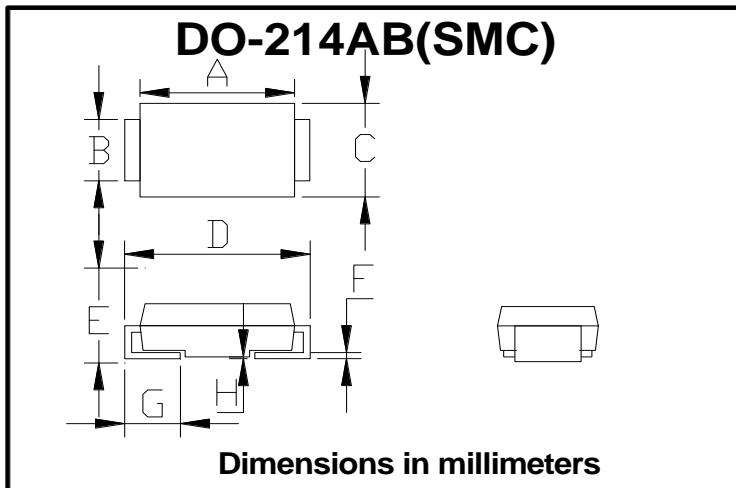


FIG.4: Typical Reverse Characteristics



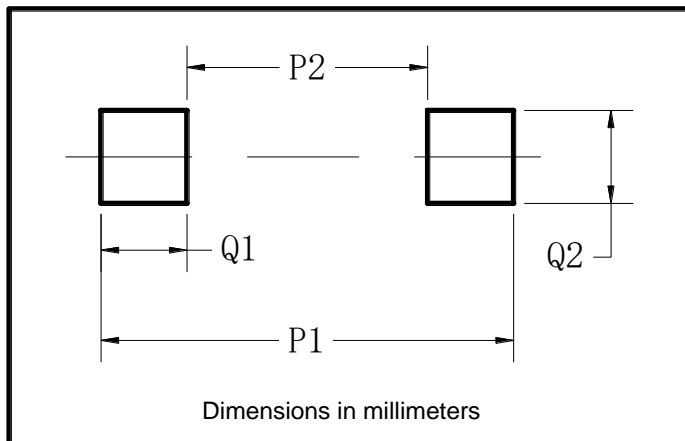


■ Outline Dimensions



DO-214AB (SMC)		
Dim	Min	Max
A	6.60	7.11
B	2.85	3.27
C	5.59	6.22
D	7.75	8.13
E	1.99	2.61
F	0.15	0.31
G	0.76	1.52
H	0.10	0.20

■ Suggested pad layout



DO-214AB (SMC)	
Dim	Min
P1	9.9
P2	3.84
Q1	3.03
Q2	3.82



SS82Q THRU SS820Q

Disclaimer

The information presented in this document is for reference only. Yangzhou Yangjie Electronic Technology Co., Ltd. reserves the right to make changes without notice for the specification of the products displayed herein to improve reliability, function or design or otherwise.

The product listed herein is designed to be used with automotive electronics, are not designed for use in medical, lifesaving, lifesustaining, or military, Yangjie or anyone on its behalf, assumes no responsibility or liability for any damages resulting from such improper use of sale.

This publication supersedes & replaces all information previously supplied. For additional information, please visit our website [http:// www.21yangjie.com](http://www.21yangjie.com) , or consult your nearest Yangjie's sales office for further assistance.